

SOCKET & CURRENT TRANSFORMER
CABINET PROVIDED BY CEL&P.

WIRING CONNECTION BETWEEN METER
SOCKET & CURRENT TRANSFORMER
BY CEL&P PERSONNEL.

THE AREA IN FRONT OF THE METER
IS TO BE CLEAR OF ALL OBSTRUCTIONS
FOR RADIUS OF 4' TO ALLOW CEL&P
SAFE ACCESS FOR READING AND
MAINTENANCE OF EQUIPMENT.

WHEN NECESSARY, PROTECTION FROM
PHYSICAL DAMAGE MUST BE PROVIDED
FOR METERING EQUIPMENT.

METER SOCKET TO BE MOUNTED
& GROUNDED BY ELECTRICAL
CONTRACTOR.

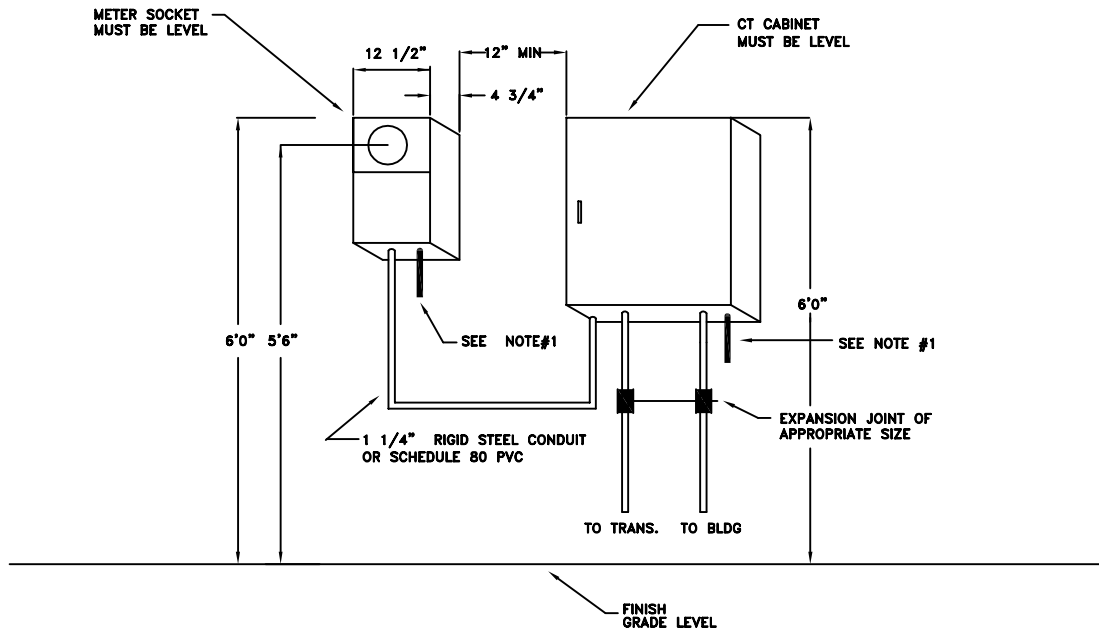
NO CHANGES ARE TO BE MADE IN
SPECIFICATIONS UNLESS APPROVED
BY CEL&P METER DEPT. IN ADVANCE.

***NOTE #1**

GROUND CONNECTION
MINIMUM CONDUCTOR SIZE #6 COPPER

GROUNDING:

- 1) TO MAIN PANEL GROUND
IN BUILDING.
- 2) IN SEPARATE SCHEDULE 80
PVC CONDUIT TO BUILDING
GROUND.



CT Cabinet
Padmount Metering