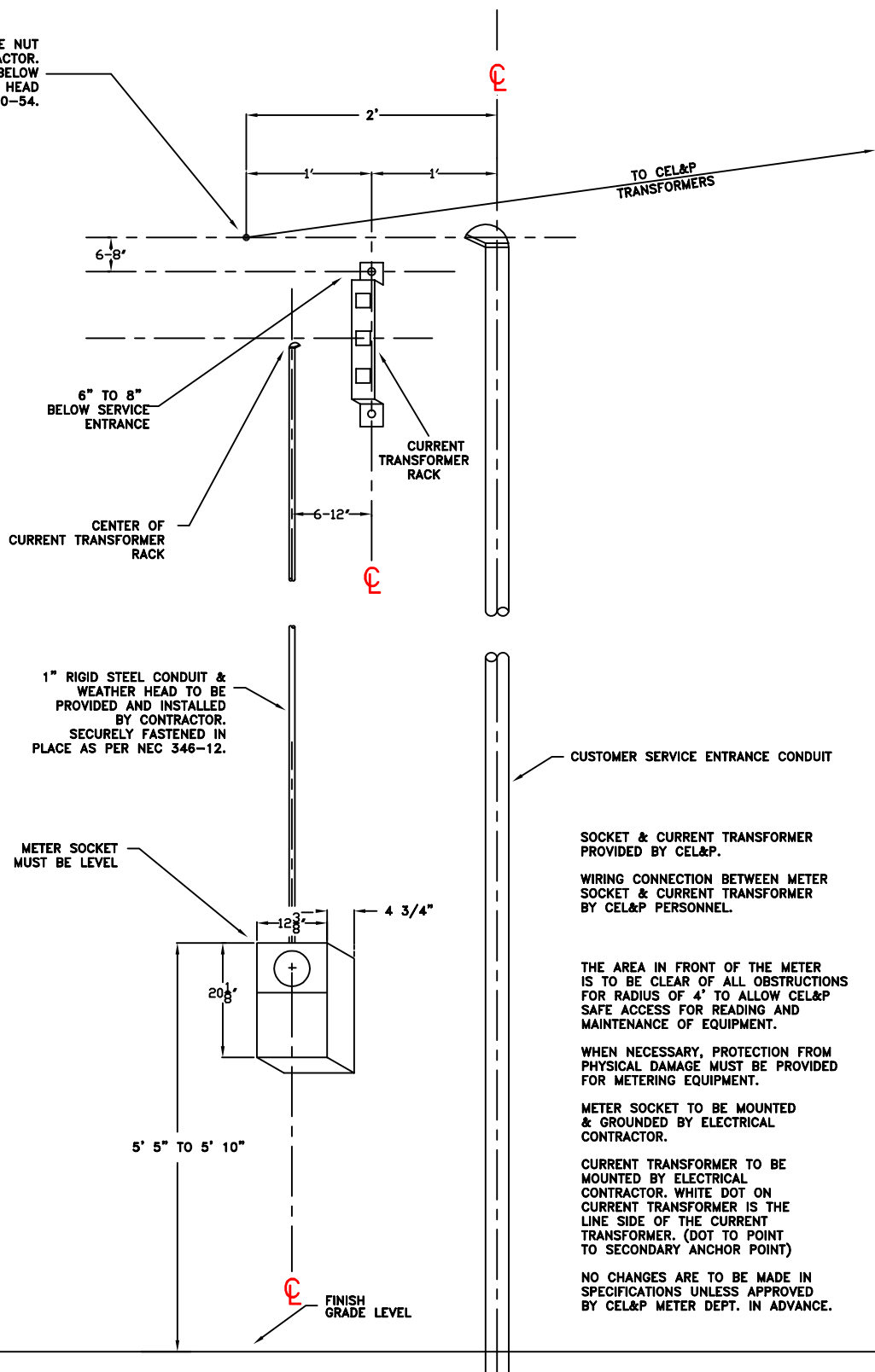


ANCHOR BOLT & EYE NUT  
INSTALLED BY CONTRACTOR.  
TO BE ON LINE WITH OR BELOW  
SERVICE ENTRANCE WEATHER HEAD  
AS PER NEC 230-54.



TO CEL&P  
TRANSFORMERS

6" TO 8"  
BELOW SERVICE  
ENTRANCE

CURRENT  
TRANSFORMER  
RACK

CENTER OF  
CURRENT TRANSFORMER  
RACK

1" RIGID STEEL CONDUIT &  
WEATHER HEAD TO BE  
PROVIDED AND INSTALLED  
BY CONTRACTOR.  
SECURELY FASTENED IN  
PLACE AS PER NEC 346-12.

CUSTOMER SERVICE ENTRANCE CONDUIT

METER SOCKET  
MUST BE LEVEL

SOCKET & CURRENT TRANSFORMER  
PROVIDED BY CEL&P.

WIRING CONNECTION BETWEEN METER  
SOCKET & CURRENT TRANSFORMER  
BY CEL&P PERSONNEL.

THE AREA IN FRONT OF THE METER  
IS TO BE CLEAR OF ALL OBSTRUCTIONS  
FOR RADIUS OF 4' TO ALLOW CEL&P  
SAFE ACCESS FOR READING AND  
MAINTENANCE OF EQUIPMENT.

WHEN NECESSARY, PROTECTION FROM  
PHYSICAL DAMAGE MUST BE PROVIDED  
FOR METERING EQUIPMENT.

METER SOCKET TO BE MOUNTED  
& GROUNDED BY ELECTRICAL  
CONTRACTOR.

CURRENT TRANSFORMER TO BE  
MOUNTED BY ELECTRICAL  
CONTRACTOR. WHITE DOT ON  
CURRENT TRANSFORMER IS THE  
LINE SIDE OF THE CURRENT  
TRANSFORMER. (DOT TO POINT  
TO SECONDARY (ANCHOR POINT))

NO CHANGES ARE TO BE MADE IN  
SPECIFICATIONS UNLESS APPROVED  
BY CEL&P METER DEPT. IN ADVANCE.



Current Transformer  
Metering on Building