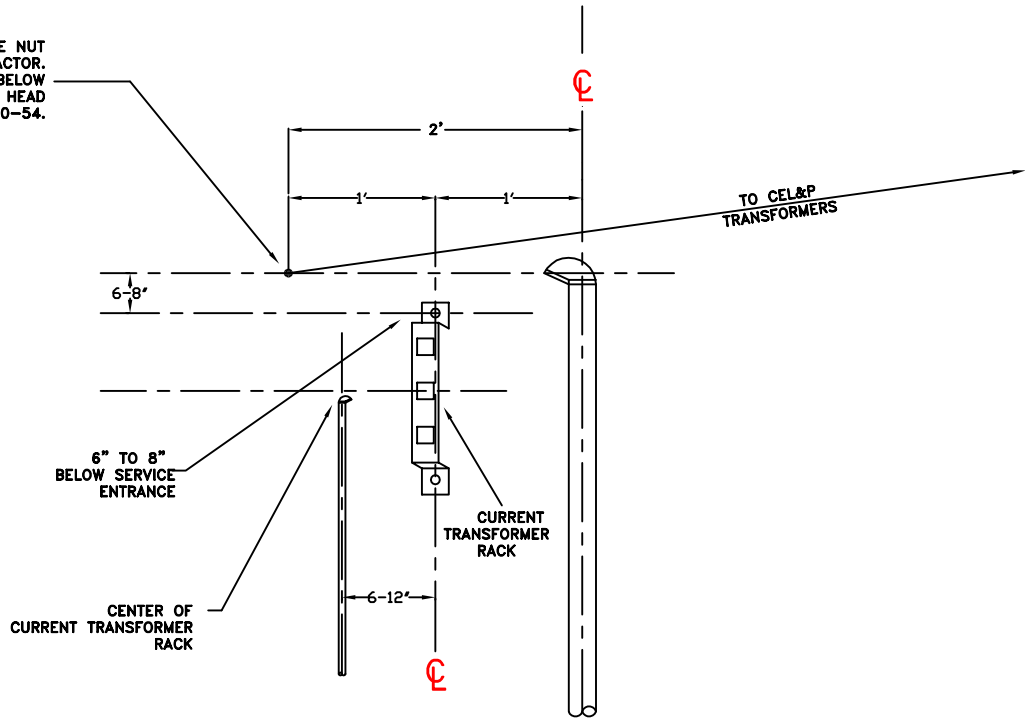
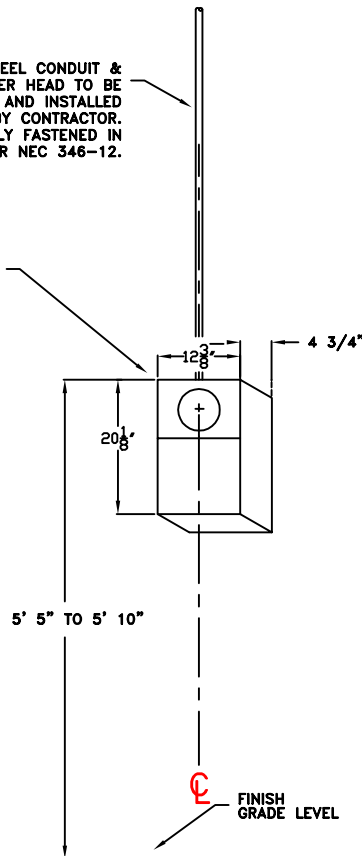


ANCHOR BOLT & EYE NUT
INSTALLED BY CONTRACTOR.
TO BE ON LINE WITH OR BELOW
SERVICE ENTRANCE WEATHER HEAD
AS PER NEC 230-54.



1" RIGID STEEL CONDUIT &
WEATHER HEAD TO BE
PROVIDED AND INSTALLED
BY CONTRACTOR.
SECURELY FASTENED IN
PLACE AS PER NEC 346-12.

METER SOCKET
MUST BE LEVEL



CUSTOMER SERVICE ENTRANCE CONDUIT

SOCKET & CURRENT TRANSFORMER
PROVIDED BY CEL&P.

WIRING CONNECTION BETWEEN METER
SOCKET & CURRENT TRANSFORMER
BY CEL&P PERSONNEL.

THE AREA IN FRONT OF THE METER
IS TO BE CLEAR OF ALL OBSTRUCTIONS
FOR RADIUS OF 4' TO ALLOW CEL&P
SAFE ACCESS FOR READING AND
MAINTENANCE OF EQUIPMENT.

WHEN NECESSARY, PROTECTION FROM
PHYSICAL DAMAGE MUST BE PROVIDED
FOR METERING EQUIPMENT.

METER SOCKET TO BE MOUNTED
& GROUNDED BY ELECTRICAL
CONTRACTOR.

CURRENT TRANSFORMER TO BE
MOUNTED BY ELECTRICAL
CONTRACTOR. WHITE DOT ON
CURRENT TRANSFORMER IS THE
LINE SIDE OF THE CURRENT
TRANSFORMER. (DOT TO POINT
TO SECONDARY ANCHOR POINT)

NO CHANGES ARE TO BE MADE IN
SPECIFICATIONS UNLESS APPROVED
BY CEL&P METER DEPT. IN ADVANCE.



Current Transformer
Metering on Building